

Specifier's Reference
Project
Type
Model No.
Comments or Special Instructions

# ILL-PA-11 END FITTING SPECIFICATION

## APPLICATION

A round walkover paver manufactured from stainless steel with either clear or frosted glass.

The clear glass gives greater light output and also allows the light to travel further, while the frosted glass creates more of a marker light effect.

Our paver fittings are suitable for use in a variety of different applications and are the ideal solution to floor level lighting both indoors and outside.

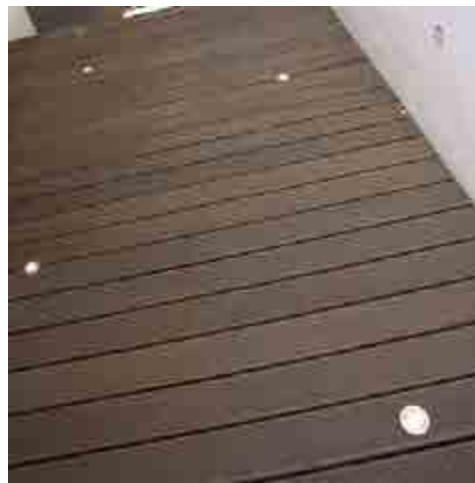
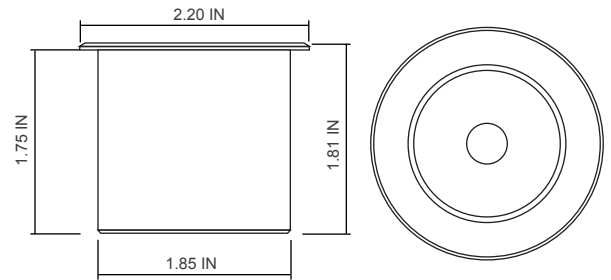
Uses include:

- Marker lighting for pathways and entrances
- Wall washing, inside or out
- Uplighting columns or archways
- Mood lighting in any room in the house, including wet rooms and pool areas

Paver fittings can be installed in many surfaces including wooden floors, decking, paving, stair skirting and concrete.

## SPECIFICATION

Glass:	Clear or frosted
Beam Angle:	75°
Material:	Stainless steel
Colours available:	Natural
Flange size:	56 mm
Weight:	497.1 g
Mounting hole size:	48 mm
Ferrule size:	M10 or 8 mm smooth
Min. Fibre size:	2 mm
Max. Fibre size:	8 mm



## Ordering Information

ILL-PA-11CG (clear glass)

ILL-PA-11FG (frosted glass)

