



EPIC™ GLOBAL SYSTEM

BEYOND THE LIMITS!

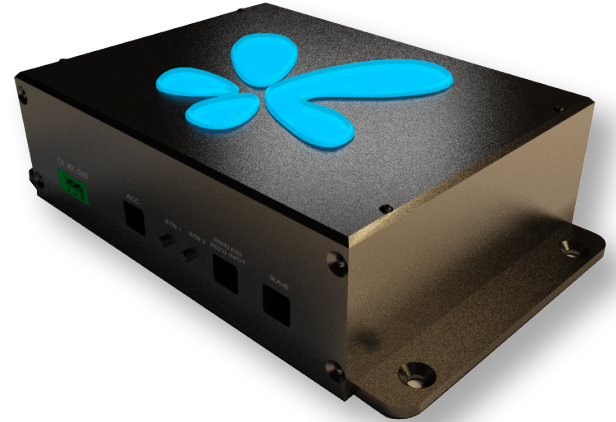


EPIC'S RS232 ADVANCED LED CONTROLLER

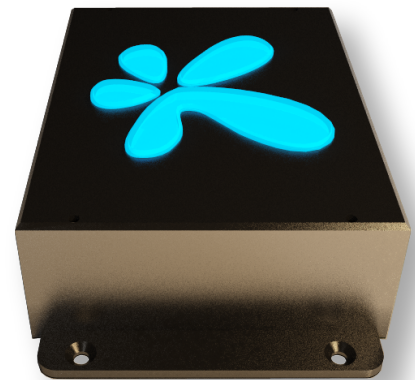
Specifier's Reference
Project
Type
Model No.
Comments or Special Instructions

SPECIFICATIONS

Power Requirement	External power supply - (power supply sold seperately)
Operating Voltage:	Input: 8-24V DC Output: 8-24V DC (depends on input)
Channel Current:	5Amp@12V DC Per Channel (Total: 40Amps) 10A@24V DC Per Channel (Total: 80Amps)
Wattage:	12V DC -120W per channel (Total: 480W) 24V DC - 480W per channel (Total: 1920W)
LED intensity control:	255 intensity levels/channel
Communication Interface:	Serial RS232 and serial TTL interface, 9600 baud, 8 data bits, 1 stop bit, no parity, no handshaking, and no flow control
Dimension:	4" x 6.75" x 1.75" in
Weight:	3.5 lbs
Control & Indicator	
Net ID:	DIP Switches
Power:	Blue LED on logo, indicates when power is applied
RGB Speed:	Blue LED on logo, indicates color changing speed
R-G-B output:	RGB LED on board
White Output:	White LED on board
Enclosure:	Black anodized aluminum with laser engraving Logo - optical grade acrylic with LEDs
Connectors:	Screw terminal up to 10Awg conductor wire diameter.
Recommended Wiring:	up to 5 Amp total 18 Awg up to 10 Amp total 16 Awg up to 20 Amp total 12 Awg up to 40 Amp total 10 Awg
Warranty	5 Years



The EP-RS232-ADV LED Controller is a highly professional and intelligent system to control common anode LED lighting or incandescent light bulbs via 2-way RS232 serial commands. The EP-RS232-ADV provides 4 high current channel to create light scenes. The controller can also operate in a standalone mode which includes pre-programmed light sequences. This LED controller is ideal used for flexible ThinGlow™ LED strips. The EP-RS232-ADV LED Controller also operate independantly or integrated into a whole-house control system.



for operating instructions! Please visit our website or contact us directly

Ordering Information

PRODUCT - EP-RS232-ADV

ACCESSORIES

- RECIEVER
- TRANSMITTER
- TOUCH PAD
- MOMENTARY-SWITCH
- RELAY
- GS-RS232
- IPAD
- IPAD-MINI
- USB-232
- WALLMOUNT-FACE-PLATE
- 2-WAY RS232 ADAPTER
- 4-WAY RS232 ADAPTER
- DIN RAIL MOUNTING BRACKET
- DIN RAIL KIT

POWER SUPPLY

- 1. 12V
- 2. 24V

WATTAGE

- 1. 25W**
- 2. 40W**
- 3. 60W**
- 4. 100W**
- 5. 150W
- 6. 200W
- 7. 250W
- 8. 350W
- 9. 500W
- 10. 750W
- 11. 1000W
- 12. 2000W

*Additional costs may apply. ** Class 2 power supplies. 12V 60W max. | 24V 100W max. Please indicate if class 2 is needed.

