

CRYSTAL FITTINGS

APPLICATION

The ILLUMINATI range of crystal fittings are all designed to give a bright sparkling point of light and a pattern of light cast onto the surrounding surfaces. Made from high quality European crystal. Four styles crystal fittings are available, each size and shape produce alternative patterns and light spread. These crystal fittings are stunning with either a white light source or color changing model.

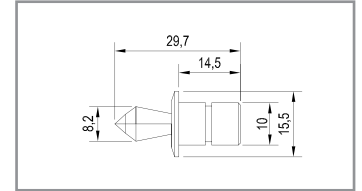
Designed for use with 1.8mm active diameter glass fiber via a special Illuminati Crystal Ferrule connection. The crystal flanges come in either in finished in Chrome or Gold standard color. Other finishes are available at extra cost.

Accessory tubes in three lengths are available to allow easy mounting through single or double skinned substrates. These are one diameter to fit all crystals.

SPECIFICATIONS

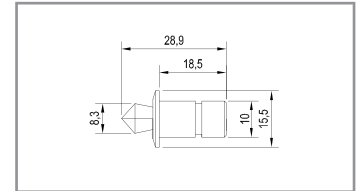
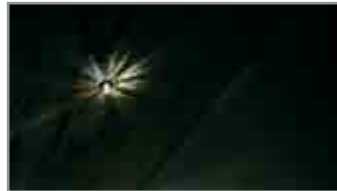
CR1

Flange Diameter = 15.5mm
Crystal Diameter = 8.2mm
Overall Length = 29.7mm
Recess depth = 14.5mm
Finishes: Chrome; Gold; Special
All dimensions are approximate and do not include ferrule or gland.



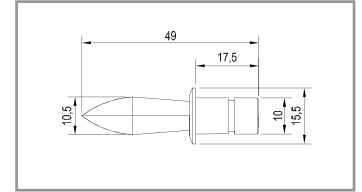
CR2

Flange Diameter = 15.5mm
Crystal Diameter = 8.3mm
Overall Length = 28.9mm
Recess depth = 18.5mm
Finishes: Chrome; Gold; Special
All dimensions are approximate and do not include ferrule or gland.



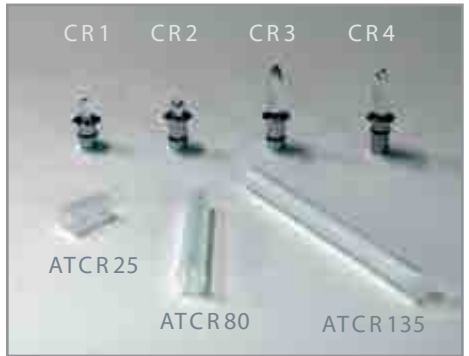
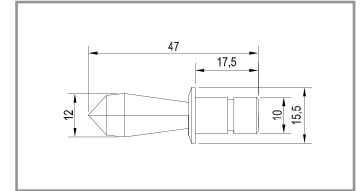
CR3

Flange Diameter = 15.5mm
Crystal Diameter = 10.5mm
Overall Length = 49.0mm
Recess depth = 17.5mm
Finishes: Chrome; Gold; Special
All dimensions are approximate and do not include ferrule or gland.



CR4

Flange Diameter = 15.5mm
Crystal Diameter = 12.0mm
Overall Length = 47.0mm
Recess depth = 17.5mm
Finishes: Chrome; Gold; Special
All dimensions are approximate and do not include ferrule or gland.



Reference
Project
Type
Model No.
Comments or Special Instructions



ACCESSORY TUBES

ATCR25 = 25mm long
ATCR80 = 80mm long
ATCR135 = 135mm long
All with 15.3mm x 0.9mm flange in translucent plastic with internal and external ribbed finish to grip hole and crystal. Drill 12mm hole and insert tube from below. Pass fibre from above through tube and insert into crystal. Push crystal into tube.

